



THE COMMUNITY OF CHOICE FOR  
EXTRAORDINARY ENTREPRENEURS

CHQ Building  
Information Deck



The CHQ Building





CHQ Side Entrance



Ely Bar & Grill



CHQ Front (Liffey) Entrance

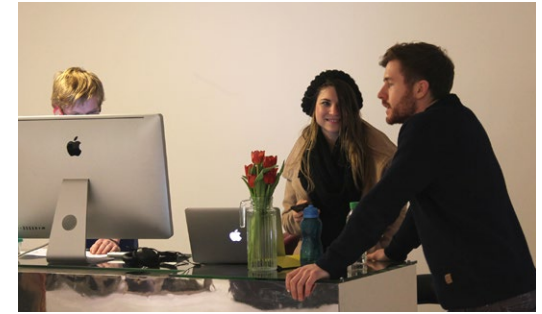
The CHQ building is placed in the heart of Dublin's expanding technology hub.

The **CHQ** is one of Ireland's most **iconic and historic buildings**. Located in the heart of Dublin's Docklands on the River Liffey. It is just 5 minutes walk from Facebook's European HQ and under 10 minutes walk from Trinity College. This cast iron and brick structure was built in 1820, with the main warehouse over stone vaults. About 8 years ago, the building underwent a comprehensive refurbishment at a cost of 45 million euro.

Last year the building was bought by **Neville Isdell**, the former Chairman and CEO of **The Coca Cola Company**, and he is enabling a new era for the building starting with **Dogpatch Labs**.







Reception Area



Hot desking



Lobby

Welcome to  
**13,500ft<sup>2</sup>** of co-  
 working space on  
 the ground floor.

Residents are charged on a **per desk / per month** rate, and will have included in the cost:

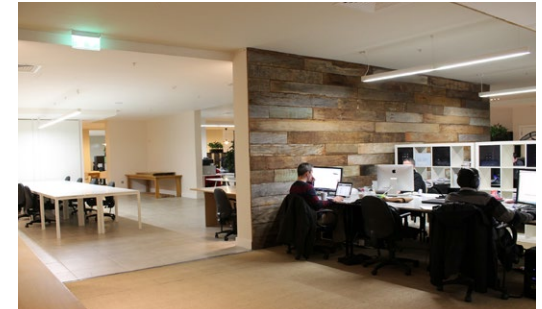
- Desks + chairs
- Meeting rooms
- Fibre based internet
- All utility bills
- All service charges
- Kitchen
- Local council rates
- Security
- Receptionist
- Refreshments + snacks







Work area



Work area



Lobby

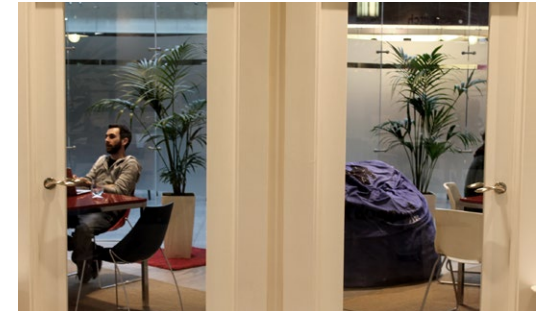
Space for up to **150 workstations**, in a diverse working environment.

The workplace incorporates a flowing **open floor plan**. A variety of work spaces are available, offering startups a choice of different work areas, from **wide open spaces** to more **quiet personal space**. The design also includes a number of **break out** and **meeting areas**.





Tube meeting room



Fully private meeting rooms



Semi private meeting rooms



Skype booths

5 internal and 2 external meeting rooms are available

A variety of meeting rooms are available:  
 2 x **medium (6-8 person) fully private** rooms  
 2 x **small semi-private enclosures** for more casual sessions  
 1 x **medium (4-6 person) room**, nicknamed the *tube room*  
 5 x video booths (2 person) for skype calls  
 2 x phone booths for private phone calls, Irish style replicas  
 2 x external large (10+ people) conference rooms within the CHQ Building

Phase 2 plans to extend the number of meeting rooms in the vaults underneath

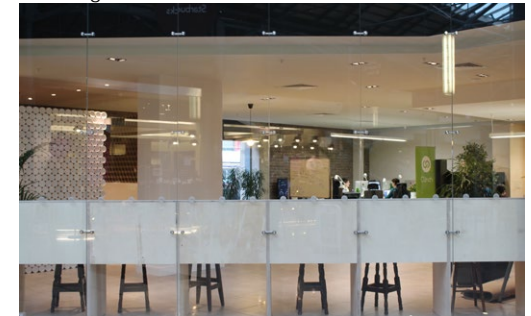




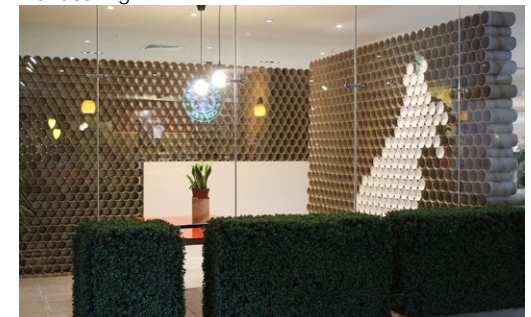
Hot desking



Standing bar



Hot desking



Meeting room

Membership is available allowing access to all office facilities and hot desking

Membership is available for people who may not need a full time desk but require access to the office facilities, including: meeting rooms, internet, printing and refreshments. Hot desks are available for use by these members and provide a great way to network and engage with the Dublin Start Up ecosystem or to just gain fast internet access while the city.





Working Bar





Canteen

The kitchen provides the **social hub** of the co-working community

Our **custom built kitchen** includes fridges, dishwasher, microwaves and coffee machines.

A **counter bar and long tables** make for a great space to eat meals and snacks, There is also a number of **cafes** in the building or people can bring their own food.

The space also becomes active for **social evenings** and where start ups and members can **casually interact** over a few beers or refreshments.



Kitchen

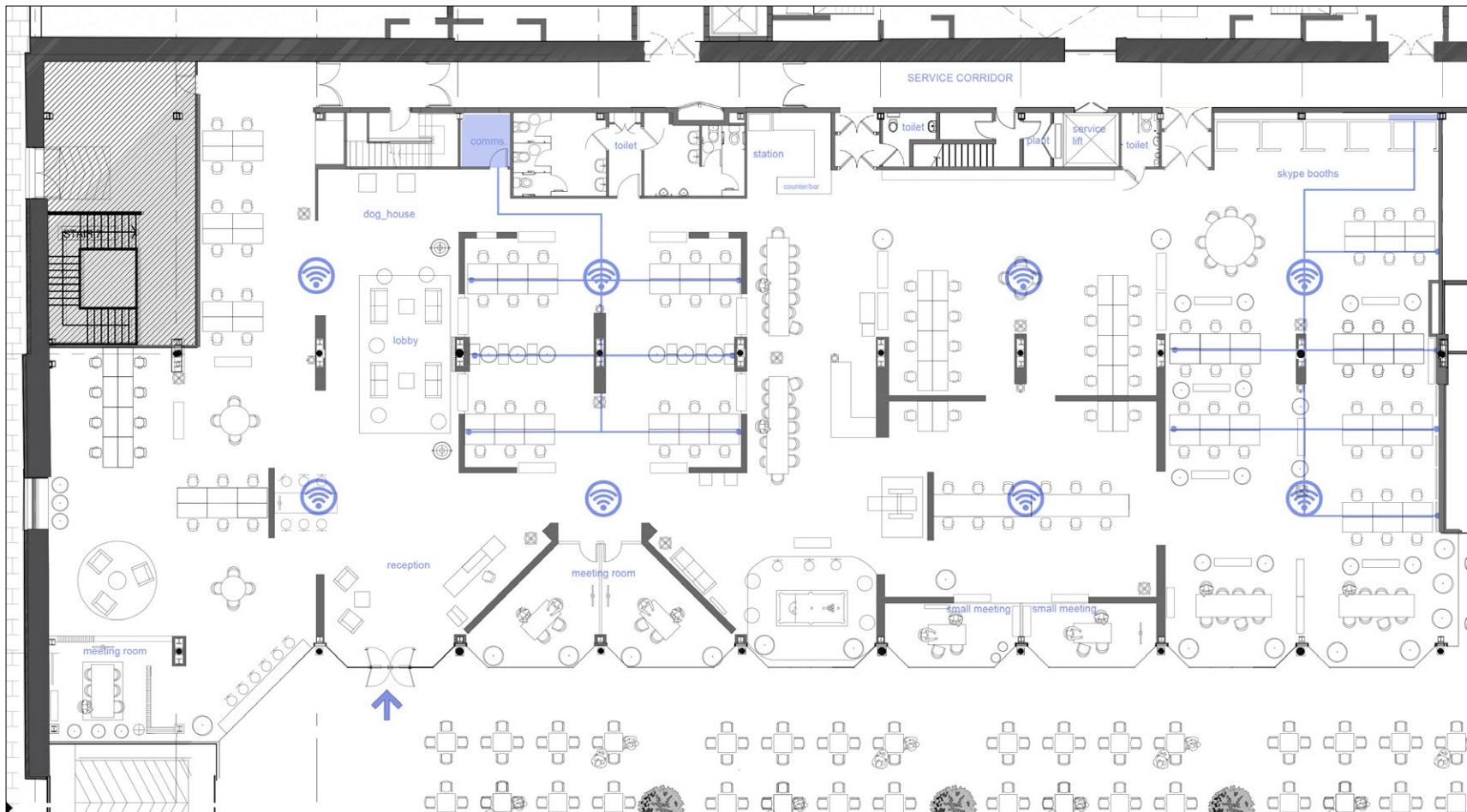


Opening evening



Opening evening





Dogpatch Labs @  
CHQ is served by  
'gigabit generation'  
wired and wifi internet  
connections.

A **10GB fibre internet connection** serves the CHQ building. It is **fully synchronous** meaning upload speeds are as fast as download speeds, ideal for developer lead startups.

Wired internet is provided using industry leading 3M pure copper **CAT 6 cabling** which is shielded for reduced insertion loss, return loss and cross-talk / interference. Designed for the gigabit generation with a **10GB capacity**, it has 10x the transmission speed of CAT 5 cabling.

**10 Wifi** access points are evenly distributed across the space. 'Wireless 802. 11AC' or '**Gigabit Wi-Fi**' is the first wireless networking standard to enable wifi speeds in excess of 1GB per second. It is three times faster than the previous generation.







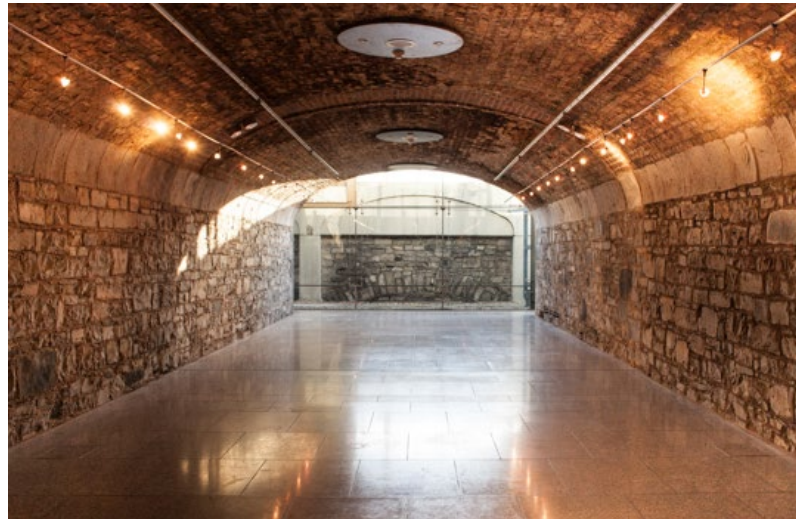
Main Atrium



The Exhibition Vaults



The Atrium & Galleria



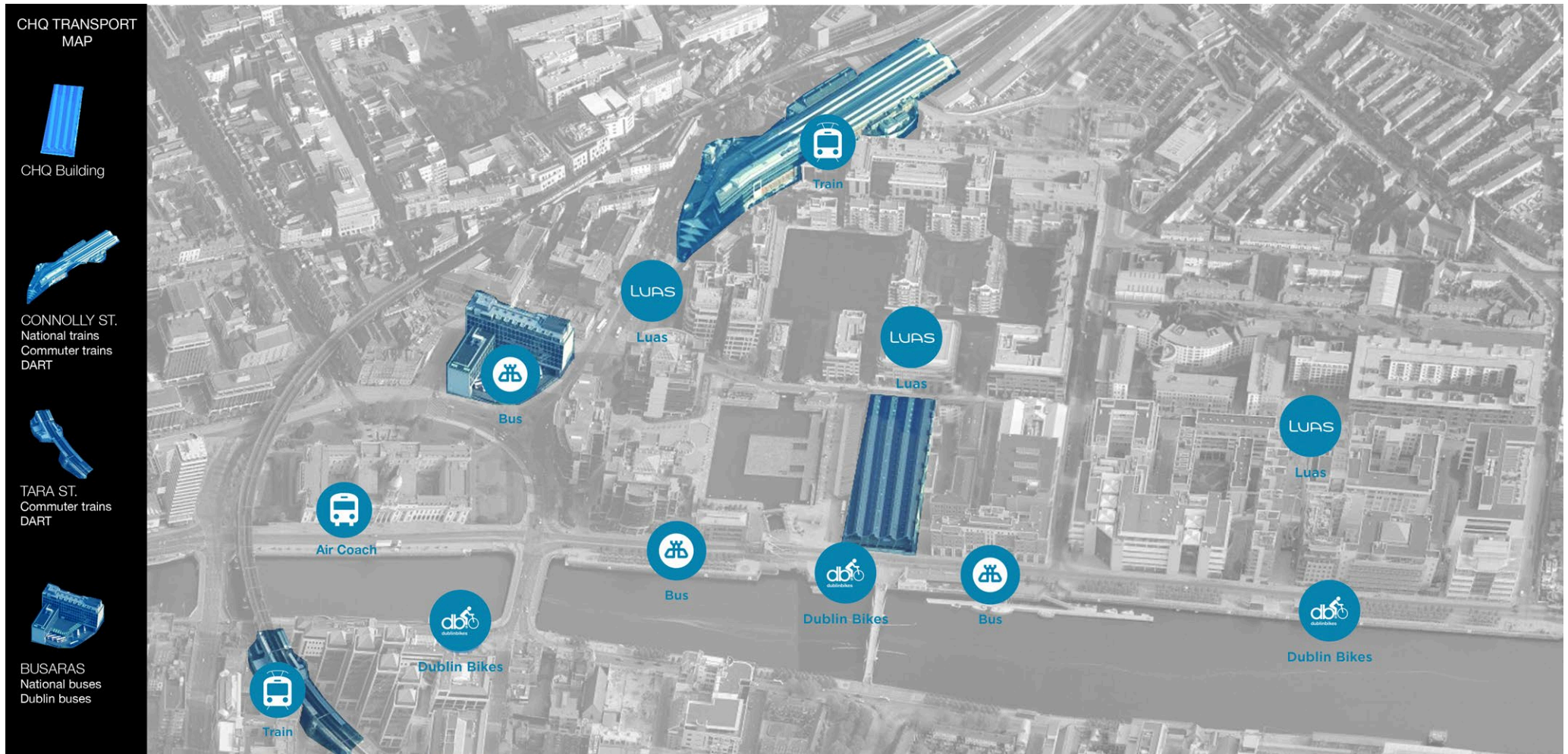
The Exhibition Vaults

The CHQ Building offers **unique spaces** for hackathons, meet-ups and other **events**.

To date the CHQ has played **host** to various organisations including **CoderDojo**, **MATHletes**, **Microsoft** and **Twitter**. In December 2014, **Facebook Europe** had its Christmas party in the main atrium and exhibition vaults of the CHQ.

Dogpatch Labs startups can rent these spaces at special **discounted rates**.





CHQ is located in a public **transport hub**, making it one of the most **connected** areas in the City.

CHQ sits on the major **transport hub** of Ireland, meaning that startup employees and visitors can easily access the location. The proximity of **public transport hubs** and nearby cultural attractions present infinite possibilities.

- Dublin Bikes
- Luas
- Busaras
- Connolly, Pearse + Tara Station
- The Convention Centre
- The 3 Arena

City Bike Rental  
Light rail network  
Bus Station  
Train Station  
Venue  
Concert Venue